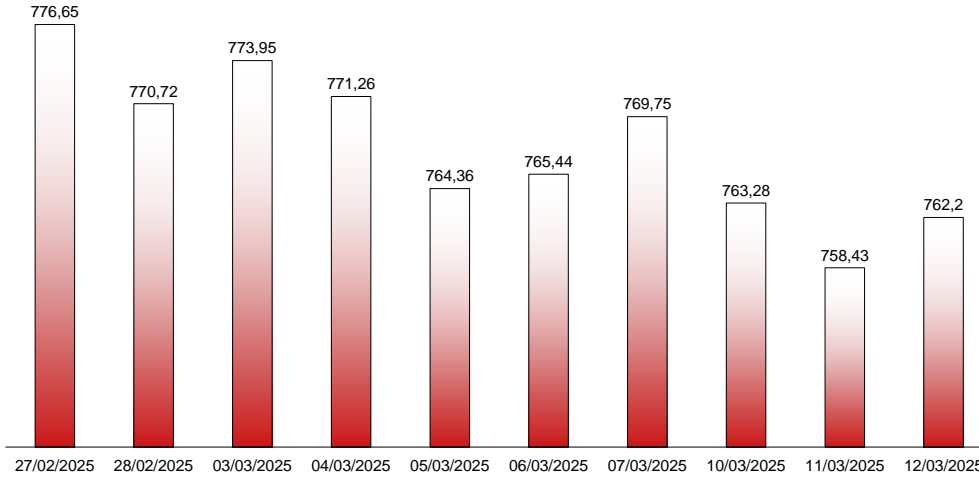




12/03/2025

**RIVERLAKE european TANKER INDEX (ReTI)\***



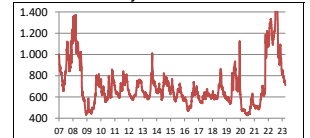
**ReTI values**

Max	14/12/22	1610,26
Today		762,20
Min	20/11/20	427,37

**ReTI trends**

daily	3,77
avg last decade	-1,60
avg last 30 days	-10,56

**ReTI since May 2007**



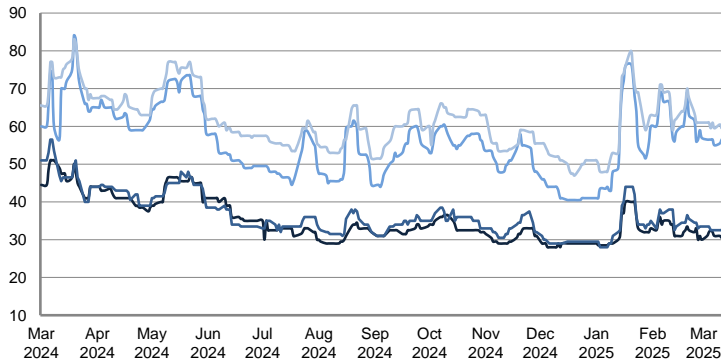
\* The Riverlake european Tanker Index (ReTI) is a composite index. All main European tanker movements are represented being six crude oil tanker routes, six clean petroleum products tanker routes and five dirty petroleum tanker routes. The oil tanker stems represented are between 6'000 MT to 135'000 MT. It covers all regions in Europe including the North Sea, Baltic Sea, UKContinent, Mediterranean and Black Sea.

**RIVERLAKE TANKER INDEX (RTI)**

**CRUDE OIL TANKERS**

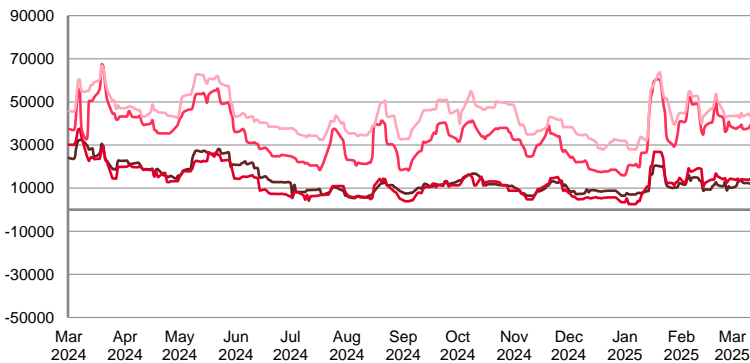
**VLCC**

**WORLDSCALE**



	TODAY	TUESDAY	DAILY TREND	MTD AVERAGE
AG / USG 280KT	30,5	30,5	▬	31,3
AG / UKC 280KT	33,5	32,5	▲	32,9
AG / EAST 270KT	57,0	56,5	▬	56,3
WAF / USG 260KT	60,0	59,5	▬	60,3

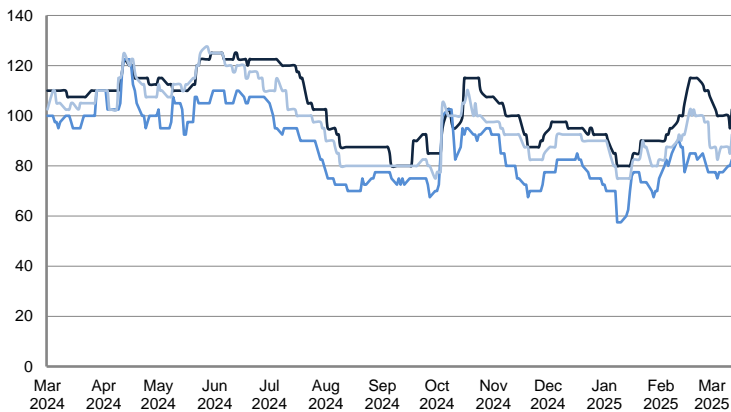
**TIME CHARTER EQUIVALENT (\$/DAY)**



	TODAY	TUESDAY	DAILY TREND	MTD AVERAGE
AG / USG 280KT	11.912,0	11.861,0	▲	12447,8
AG / UKC 280KT	15.543,0	14.029,0	▲	14109,5
AG / EAST 270KT	39.982,0	39.299,0	▲	38503,4
WAF / USG 260KT	43.809,0	43.191,0	▲	43679,1

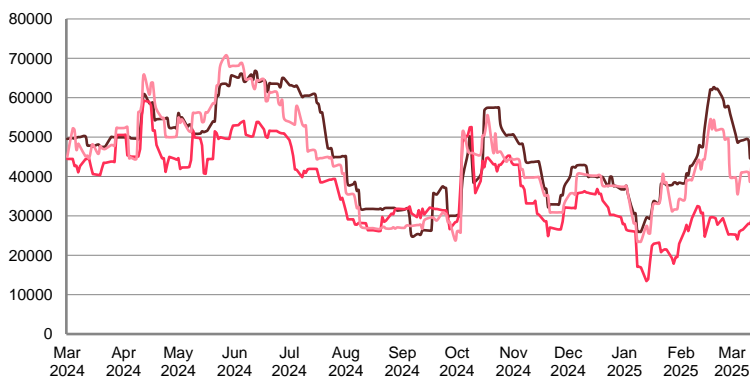
**SUEZMAX**

**WORLDSCALE**



	TODAY	TUESDAY	DAILY TREND	MTD AVERAGE
—BSEA / MED 135kT	102,5	95,0	▲	100,0
—WAF / USG 130kT	82,5	80,0	▲	60,3
—XMED 135kT	92,5	85,0	▲	86,9

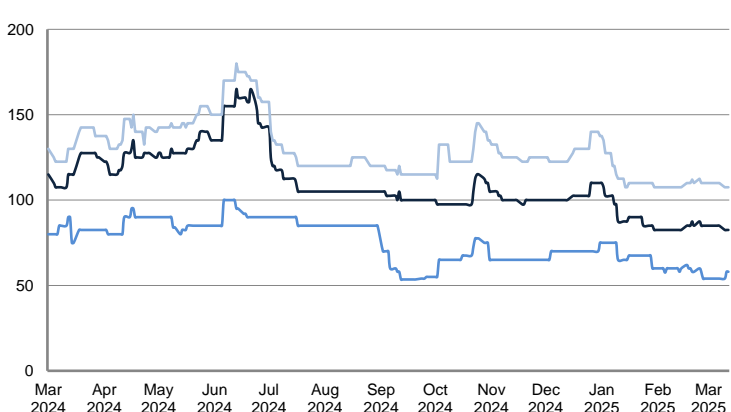
**TIME CHARTER EQUIVALENT (\$/DAY)**



	TODAY	TUESDAY	DAILY TREND	MTD AVERAGE
—BSEA / MED 135kT	51.936,0	44.599,0	▲	49035,6
—WAF / USG 130kT	29.528,0	27.978,0	▲	26712,0
—XMED 135kT	46.177,0	38.771,0	▲	40164,3

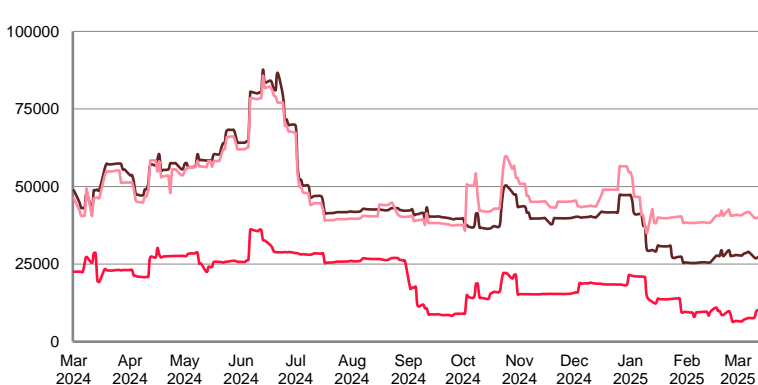
**AFRAMAX**

**WORLDSCALE**



	TODAY	TUESDAY	DAILY TREND	MTD AVERAGE
—BALTIC / UKC 100kT	82,5	82,5	▬	84,1
—BALTIC / STATES 100kT	58,0	58,0	▬	55,0
—NSEA / UKC 80kT	107,5	107,5	▬	109,1

**TIME CHARTER EQUIVALENT (\$/DAY)**

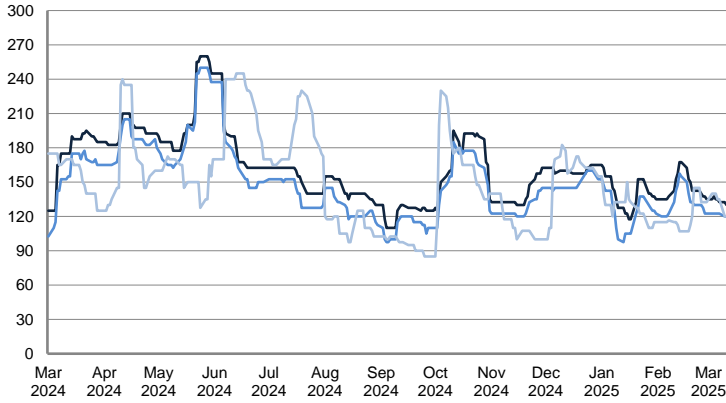


	TODAY	TUESDAY	DAILY TREND	MTD AVERAGE
—BALTIC / UKC 100kT	27.264,0	26.860,0	▲	27926,8
—BALTIC / STATES 100kT	10.204,0	9.737,0	▲	7943,4
—NSEA / UKC 80kT	40.051,0	39.744,0	▲	40835,3

CRUDE OIL TANKERS

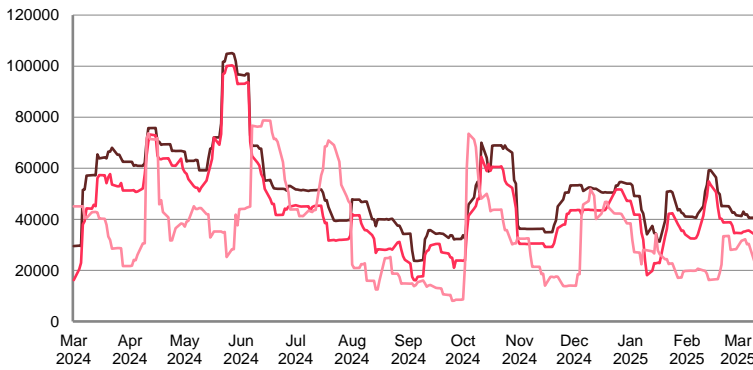
AFRAMAX

WORLDSCALE



	TODAY	TUESDAY	DAILY TREND	MTD AVERAGE
BSEA / MED 80kT	130,0	130,0	▲	133,4
XMED 80kT	117,5	120,0	▼	121,3
CAR / USA 70kT	122,5	120,0	▲	131,6

TIME CHARTER EQUIVALENT (\$/DAY)

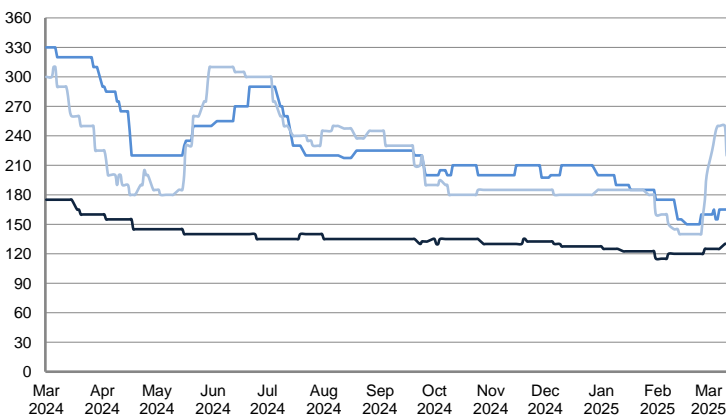


	TODAY	TUESDAY	DAILY TREND	MTD AVERAGE
BSEA / MED 80kT	39.451,0	39.348,0	▲	41011,1
XMED 80kT	32.819,0	34.311,0	▼	34672,5
CAR / USA 70kT	24.697,0	23.566,0	▲	28523,5

PRODUCT TANKERS

DPP

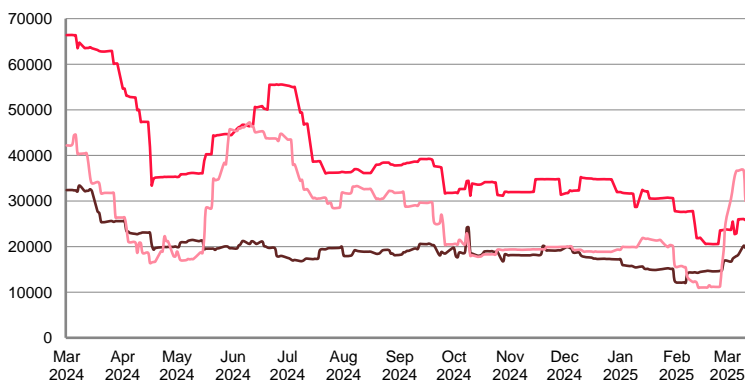
WORLDSCALE



	TODAY	TUESDAY	DAILY TREND	MTD AVERAGE
BALTIC / STATES 55kT	130,0	130,0	▲	126,9
BALTIC / UKC 30kT	165,0	165,0	▲	161,9
BSEA / MED 30kT	220,0	220,0	▲	236,9

\*Since 1 January 2023, rates from the Baltic, which included rates from Russian ports, are no longer quoted. This explains the correction.

TIME CHARTER EQUIVALENT (\$/DAY)

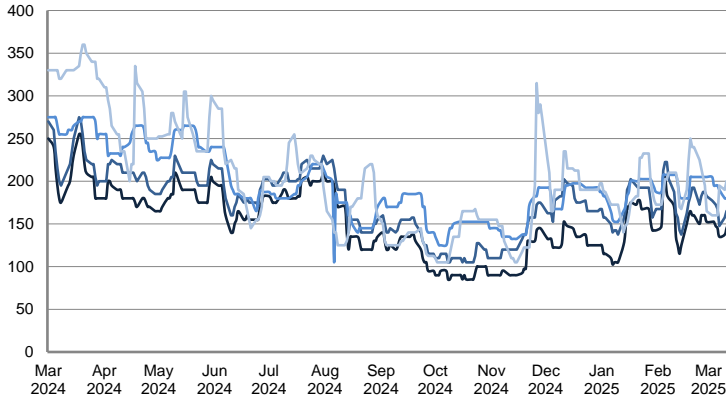


	TODAY	TUESDAY	DAILY TREND	MTD AVERAGE
BALTIC / STATES 55kT	20.344,0	19.724,0	▲	18512,6
BALTIC / UKC 30kT	26.150,0	25.797,0	▲	24844,0
BSEA / MED 30kT	30.137,0	30.067,0	▲	33611,9

PRODUCT TANKERS

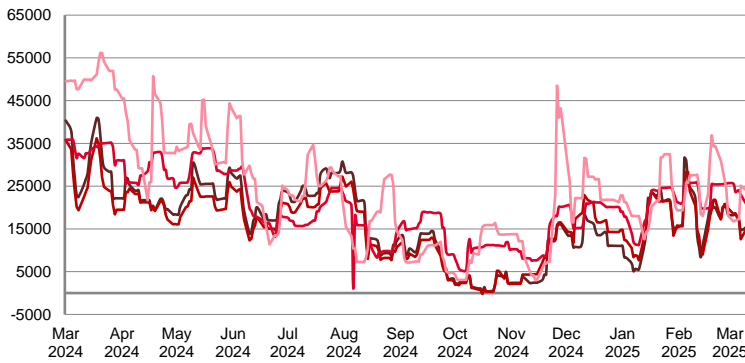
CPP

WORLDSCALE



	TODAY	TUESDAY	DAILY TREND	MTD AVERAGE
UKC / STATES 37kT	150,0	145,0	▲	145,6
UKC / WAF 33kT	167,5	165,0	▲	166,3
BALTIC / UKC 30kT	180,0	180,0	■	190,0
BSEA / MED 30kT	200,0	200,0	■	178,1

TIME CHARTER EQUIVALENT (\$/DAY)

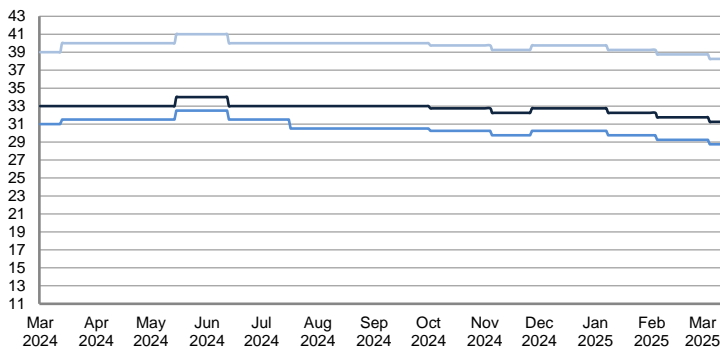


	TODAY	TUESDAY	DAILY TREND	MTD AVERAGE
UKC / STATES 37kT	18.791,0	17.098,0	▲	17237,6
UKC / WAF 33kT	17.391,0	16.369,0	▲	16653,3
BALTIC / UKC 30kT	20.944,0	20.598,0	▲	22813,1
BSEA / MED 30kT	26.417,0	26.352,0	▲	21246,1

SMALL TANKERS

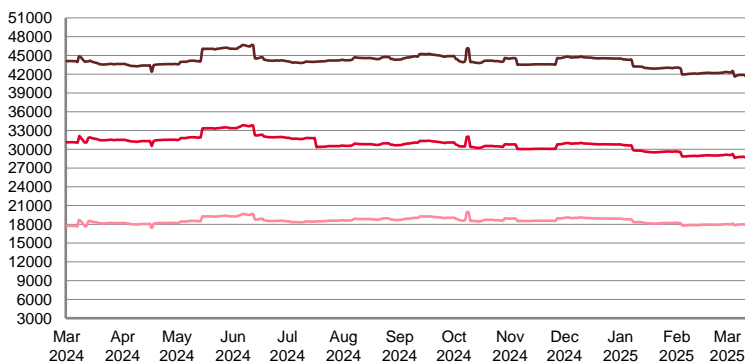
DPP

\$ / T



	TODAY	TUESDAY	DAILY TREND	MTD AVERAGE
BALTIC / UKC 15kT	31,3	31,3	■	31,4
BALTIC / UKC 12kT	28,8	28,8	■	28,9
BALTIC / UKC 6kT	38,3	38,3	■	38,4

TIME CHARTER EQUIVALENT (\$/DAY)

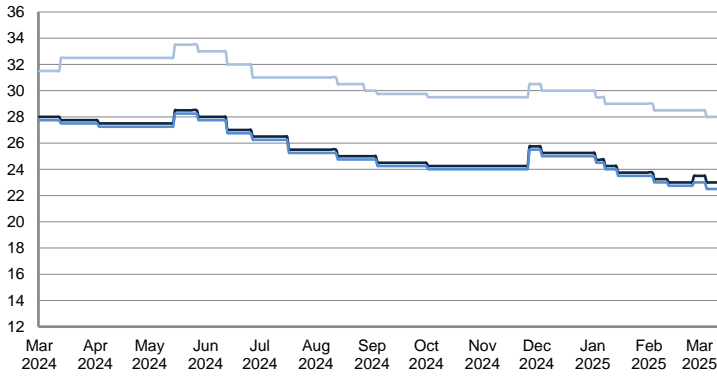


	TODAY	TUESDAY	DAILY TREND	MTD AVERAGE
BALTIC / UKC 15kT	41.953,0	41.733,0	▲	41953,6
BALTIC / UKC 10kT	28.854,0	28.689,0	▲	28845,8
BALTIC / UKC 6kT	18.034,0	17.905,0	▲	17973,1

SMALL TANKERS

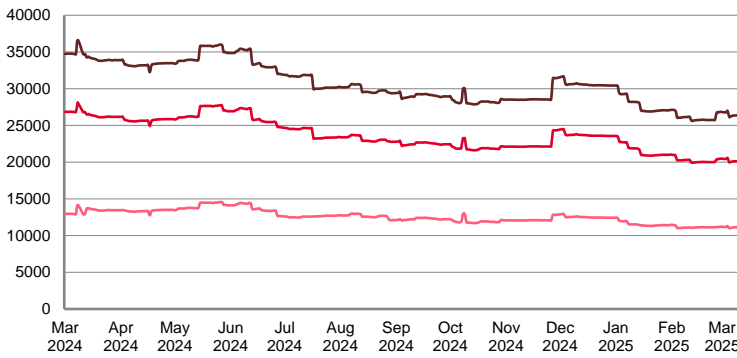
CPP

\$ / T



	TODAY	TUESDAY	DAILY TREND	MTD AVERAGE
BALTIC / UKC 15KT	23,0	23,0	▬	23,1
BALTIC / UKC 12KT	22,5	22,5	▬	22,6
BALTIC / UKC 6KT	28,0	28,0	▬	28,1

TIME CHARTER EQUIVALENT (\$/DAY)

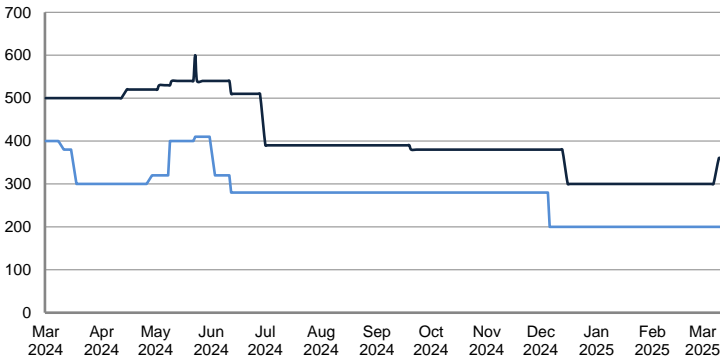


	TODAY	TUESDAY	DAILY TREND	MTD AVERAGE
BALTIC / UKC 15KT	26.425,0	26.243,0	▲	26437,9
BALTIC / UKC 12KT	20.173,0	20.028,0	▲	20178,9
BALTIC / UKC 6KT	11.162,0	11.058,0	▲	11120,0

SMALL TANKERS - AFRICA

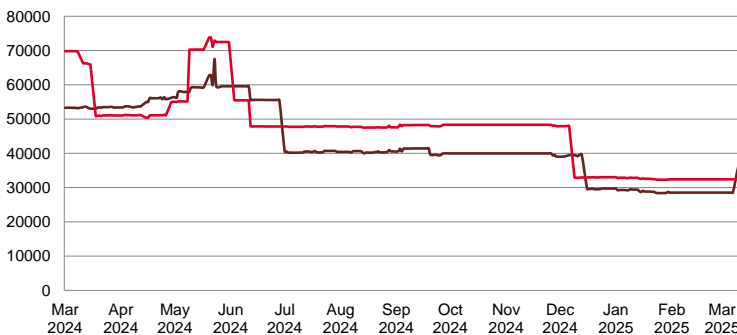
CPP

LUMPSUM (000's US\$)



	TODAY	TUESDAY	DAILY TREND	MTD AVERAGE
XWAF 15kT	360.000,0	360.000,0	▬	322500,0
XWAF 10kT	200.000,0	200.000,0	▬	175000,0

TIME CHARTER EQUIVALENT (\$/DAY)



	TODAY	TUESDAY	DAILY TREND	MTD AVERAGE
XWAF 15kT	36.087,0	36.087,0	▬	31369,5
XWAF 10kT	32.416,0	32.416,0	▬	32416,0

Disclaimer:

This publication has been prepared by Riverlake.

While every care has been taken to ensure the accuracy of the information contained in the document, Riverlake does not assume or accept any responsibility for the correctness or completeness of the material set out herein. The rates contained in this publication are indicative only and are subject to change without notice.

The views expressed do not necessarily reflect the views of Riverlake or any of the Riverlake affiliated companies. It should not be seen or regarded as a business recommendation or a solicitation to do business.

This publication is copyright of Riverlake. Unauthorised reproduction or redistribution is prohibited unless approved by Riverlake.