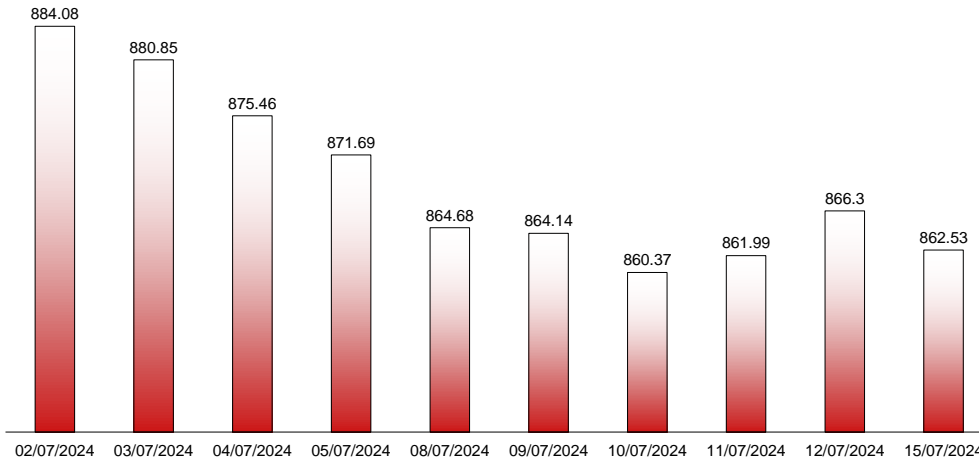




15/07/2024

**RIVERLAKE european TANKER INDEX (ReTI)\***



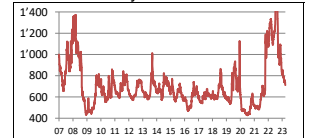
ReTI values

Max	14/12/22	1610.26
Today		862.53
Min	20/11/20	427.37

ReTI trends

daily	-3.77
avg last decade	-17.29
avg last 30 days	-36.91

ReTI since May 2007



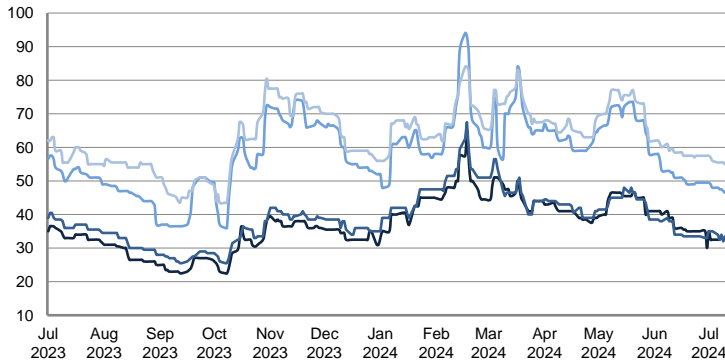
\* The Riverlake european Tanker Index (ReTI) is a composite index. All main European tanker movements are represented being six crude oil tanker routes, six clean petroleum products tanker routes and five dirty petroleum tanker routes. The oil tanker stems represented are between 6'000 MT to 135'000 MT. It covers all regions in Europe including the North Sea, Baltic Sea, UKContinent, Mediterranean and Black Sea.

**RIVERLAKE TANKER INDEX (RTI)**

**CRUDE OIL TANKERS**

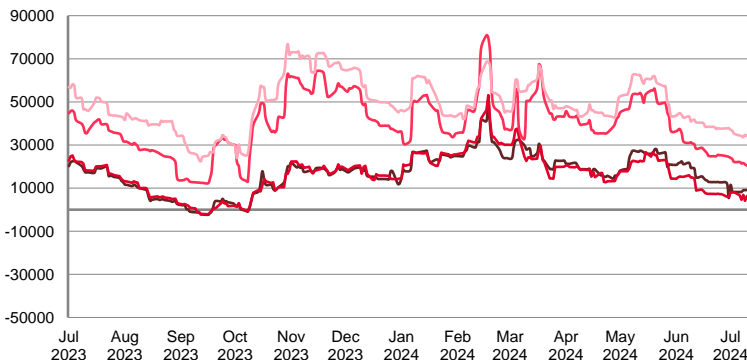
VLCC

**WORLDSCALE**



	TODAY	FRIDAY	DAILY TREND	MTD AVERAGE
AG / USG 280kT	33.0	33.0	—	32.9
AG / UKC 280kT	33.5	33.5	—	33.7
AG / EAST 270kT	46.5	46.5	—	48.0
WAF / USG 260kT	55.0	55.0	—	56.1

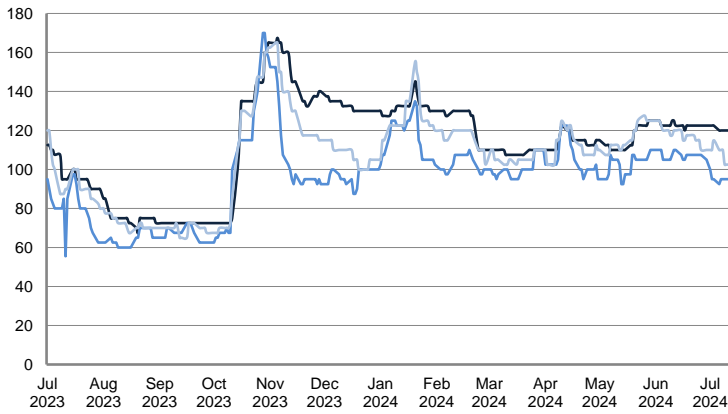
**TIME CHARTER EQUIVALENT (\$/DAY)**



	TODAY	FRIDAY	DAILY TREND	MTD AVERAGE
AG / USG 280kT	9'191.0	9'130.0	▲	8932.6
AG / UKC 280kT	6'348.0	6'287.0	▲	6457.9
AG / EAST 270kT	20'534.0	20'482.0	▲	22371.8
WAF / USG 260kT	34'286.0	34'280.0	▲	35444.5

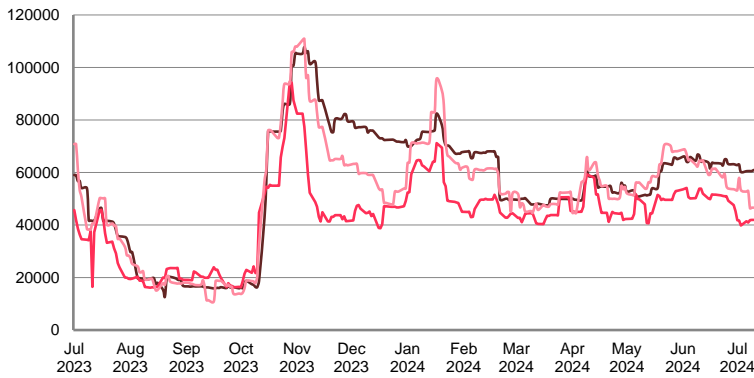
**SUEZMAX**

**WORLDSCALE**



	TODAY	FRIDAY	DAILY TREND	MTD AVERAGE
—BSEA / MED 135KT	120.0	120.0	▬	121.1
—WAF / USG 130KT	95.0	95.0	▬	56.1
—XMED 135KT	102.5	102.5	▬	108.4

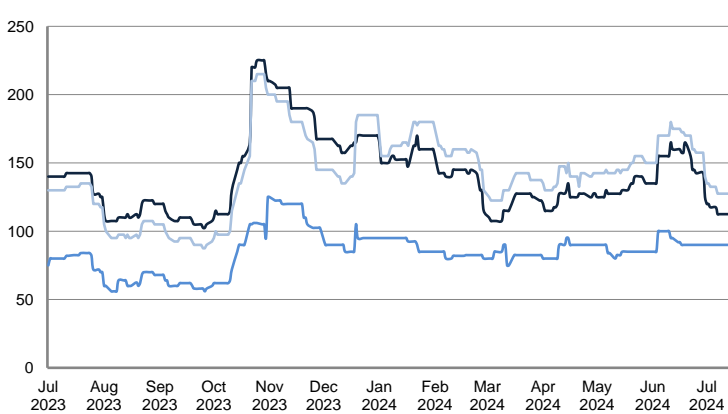
**TIME CHARTER EQUIVALENT (\$/DAY)**



	TODAY	FRIDAY	DAILY TREND	MTD AVERAGE
—BSEA / MED 135KT	60'936.0	60'550.0	▲	61676.6
—WAF / USG 130KT	41'942.0	41'940.0	▲	43046.2
—XMED 135KT	46'608.0	46'594.0	▲	51879.7

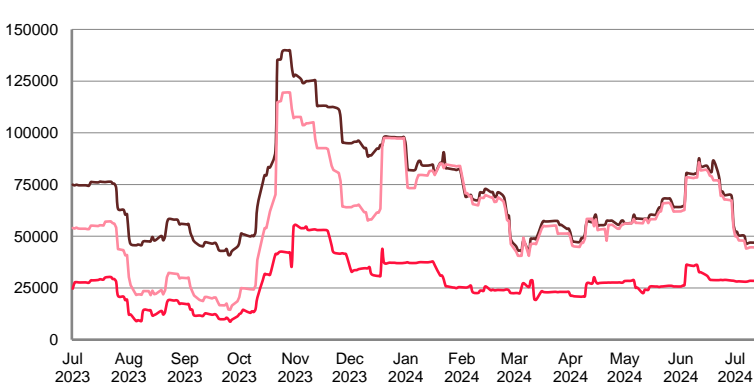
**AFRAMAX**

**WORLDSCALE**



	TODAY	FRIDAY	DAILY TREND	MTD AVERAGE
—BALTIC / UKC 100KT	112.5	112.5	▬	118.6
—BALTIC / STATES 100KT	90.0	90.0	▬	90.0
—NSEA / UKC 80KT	127.5	127.5	▬	133.6

**TIME CHARTER EQUIVALENT (\$/DAY)**

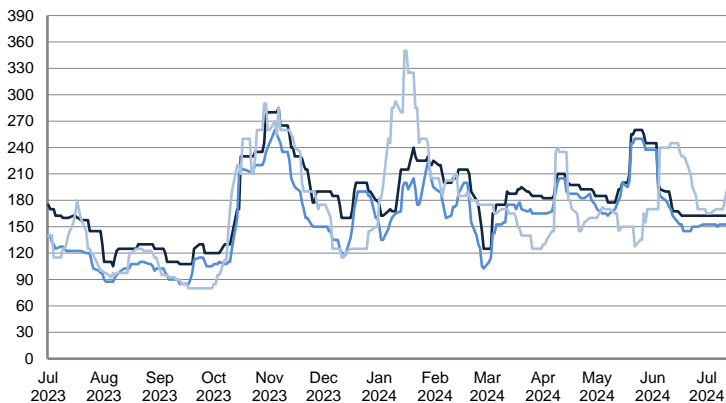


	TODAY	FRIDAY	DAILY TREND	MTD AVERAGE
—BALTIC / UKC 100KT	46'852.0	46'945.0	▼	51332.3
—BALTIC / STATES 100KT	28'369.0	28'467.0	▼	28281.6
—NSEA / UKC 80KT	44'576.0	44'660.0	▼	49032.1

CRUDE OIL TANKERS

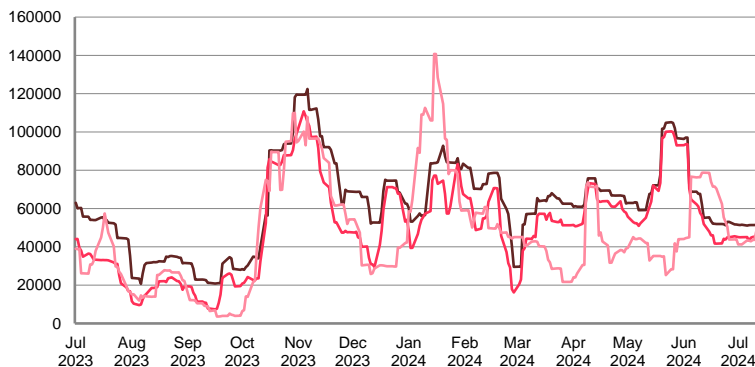
AFRAMAX

WORLDSCALE



	TODAY	FRIDAY	DAILY TREND	MTD AVERAGE
BSEA / MED 80kT	162.5	162.5	▲	162.5
XMED 80kT	152.5	152.5	▲	152.3
CAR / USA 70kT	200.0	170.0	▲	171.4

TIME CHARTER EQUIVALENT (\$/DAY)

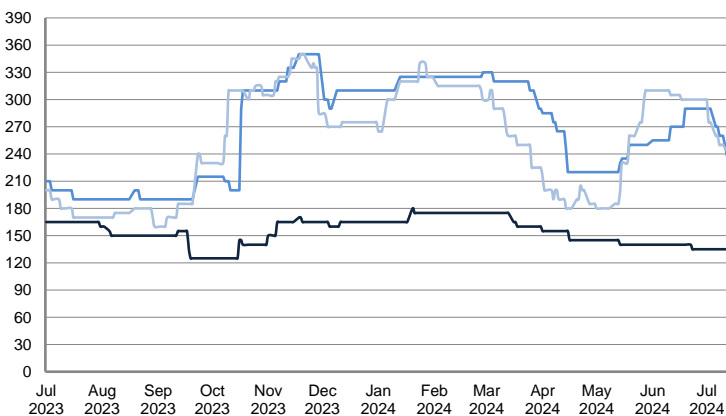


	TODAY	FRIDAY	DAILY TREND	MTD AVERAGE
BSEA / MED 80kT	51'700.0	51'392.0	▲	51457.4
XMED 80kT	45'309.0	45'314.0	▼	44985.5
CAR / USA 70kT	57'245.0	43'663.0	▲	44137.1

PRODUCT TANKERS

DPP

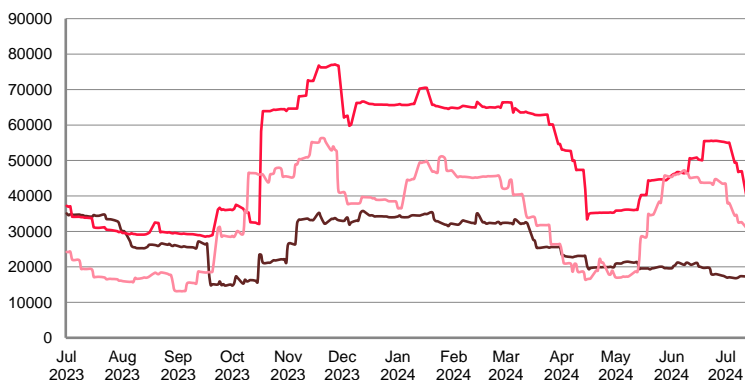
WORLDSCALE



	TODAY	FRIDAY	DAILY TREND	MTD AVERAGE
BALTIC / STATES 55kT	135.0	135.0	▲	135.0
BALTIC / UKC 30kT	230.0	260.0	▼	272.7
BSEA / MED 30kT	240.0	250.0	▼	269.1

\*Since 1 January 2023, rates from the Baltic, which included rates from Russian ports, are no longer quoted. This explains the correction.

TIME CHARTER EQUIVALENT (\$/DAY)

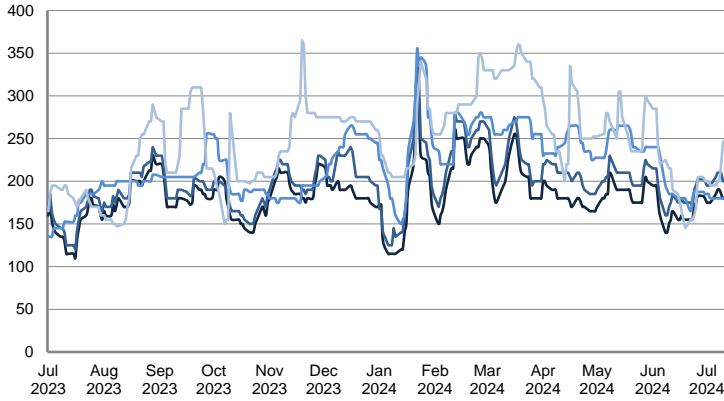


	TODAY	FRIDAY	DAILY TREND	MTD AVERAGE
BALTIC / STATES 55kT	17'245.0	17'372.0	▼	17157.5
BALTIC / UKC 30kT	38'618.0	46'965.0	▼	50339.7
BSEA / MED 30kT	30'639.0	32'556.0	▼	36713.1

PRODUCT TANKERS

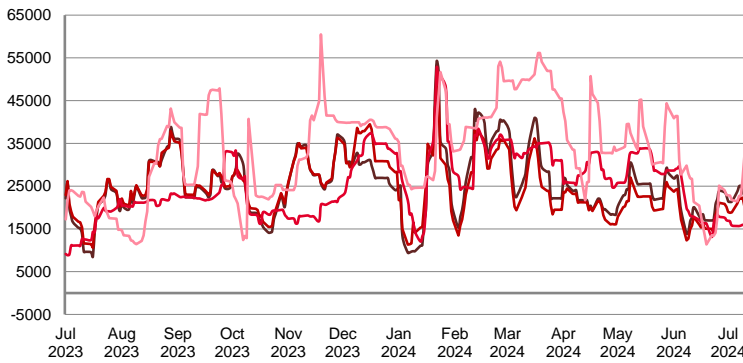
CPP

WORLDSCALE



	TODAY	FRIDAY	DAILY TREND	MTD AVERAGE
UKC / STATES 37kT	180.0	180.0	▬	181.6
UKC / WAF 33kT	200.0	200.0	▬	202.0
BALTIC / UKC 30kT	185.0	180.0	▲	182.5
BSEA / MED 30kT	255.0	245.0	▲	210.5

TIME CHARTER EQUIVALENT (\$/DAY)

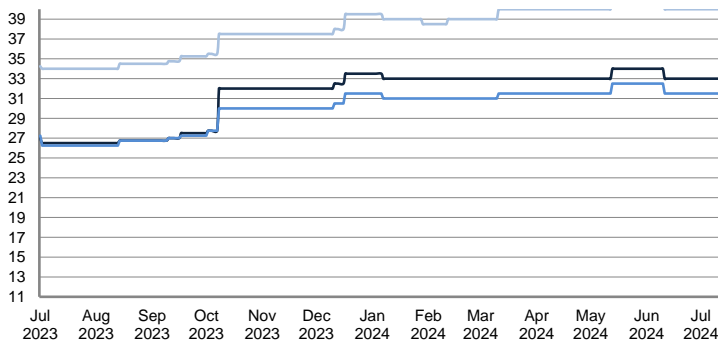


	TODAY	FRIDAY	DAILY TREND	MTD AVERAGE
UKC / STATES 37kT	22'746.0	22'833.0	▼	23079.8
UKC / WAF 33kT	20'063.0	20'152.0	▼	20464.2
BALTIC / UKC 30kT	16'954.0	15'988.0	▲	16379.4
BSEA / MED 30kT	34'703.0	32'352.0	▲	25023.6

SMALL TANKERS

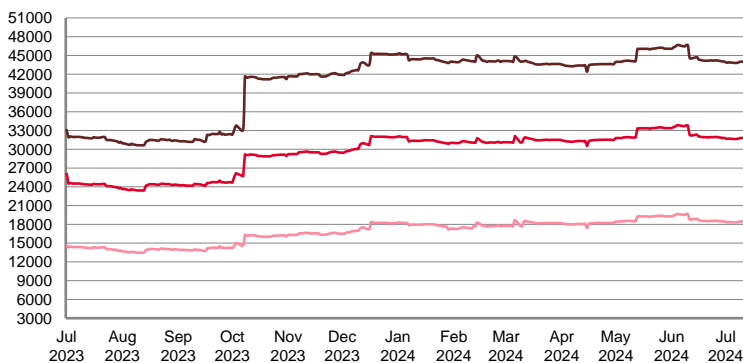
DPP

\$ / T



	TODAY	FRIDAY	DAILY TREND	MTD AVERAGE
BALTIC / UKC 15kT	33.0	33.0	▬	33.0
BALTIC / UKC 12kT	31.5	31.5	▬	31.5
BALTIC / UKC 6kT	40.0	40.0	▬	40.0

TIME CHARTER EQUIVALENT (\$/DAY)

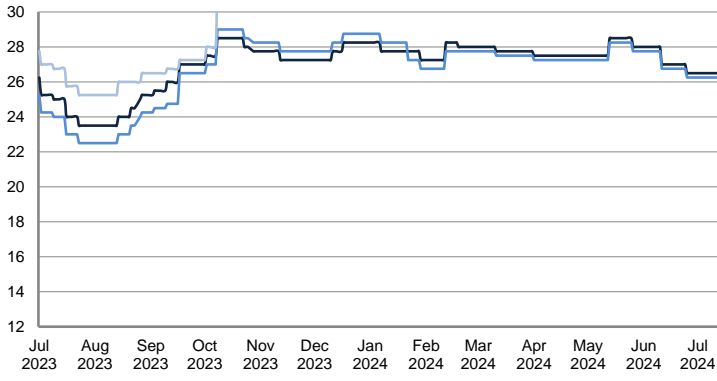


	TODAY	FRIDAY	DAILY TREND	MTD AVERAGE
BALTIC / UKC 15kT	43'962.0	44'008.0	▼	43922.0
BALTIC / UKC 10kT	31'774.0	31'809.0	▼	31734.3
BALTIC / UKC 6kT	18'434.0	18'462.0	▼	18400.2

SMALL TANKERS

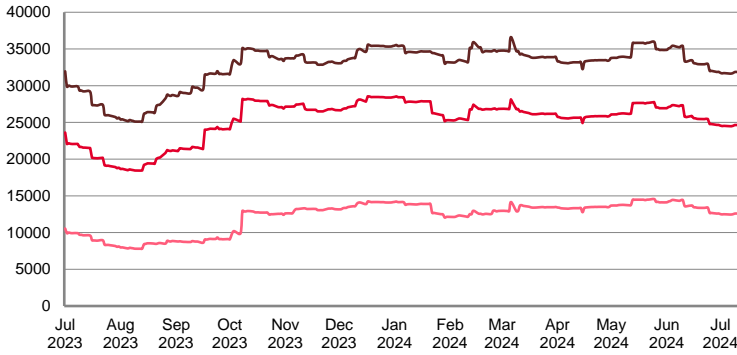
CPP

\$ / T



	TODAY	FRIDAY	DAILY TREND	MTD AVERAGE
BALTIC / UKC 15KT	26.5	26.5	↔	26.5
BALTIC / UKC 12KT	26.3	26.3	↔	26.3
BALTIC / UKC 6KT	31.0	31.0	↔	31.0

TIME CHARTER EQUIVALENT (\$/DAY)

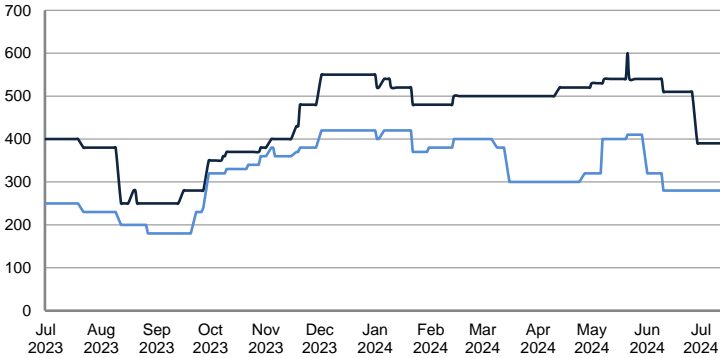


	TODAY	FRIDAY	DAILY TREND	MTD AVERAGE
BALTIC / UKC 15KT	31'831.0	31'872.0	▼	31770.7
BALTIC / UKC 12KT	24'618.0	24'650.0	▼	24574.5
BALTIC / UKC 6KT	12'568.0	12'592.0	▼	12530.4

SMALL TANKERS - AFRICA

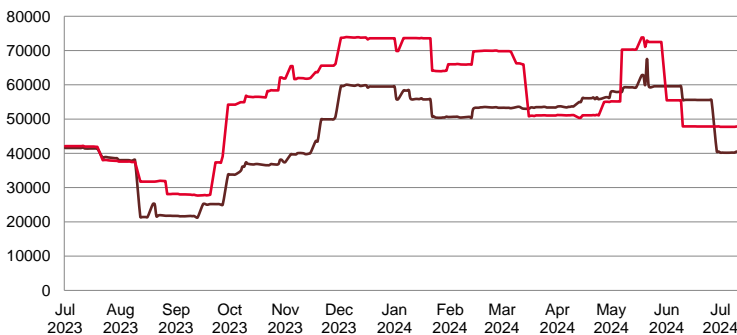
CPP

LUMPSUM (000's US\$)



	TODAY	FRIDAY	DAILY TREND	MTD AVERAGE
XWAF 15kT	390'000.0	390'000.0	↔	390000.0
XWAF 10kT	280'000.0	280'000.0	↔	280000.0

TIME CHARTER EQUIVALENT (\$/DAY)



	TODAY	FRIDAY	DAILY TREND	MTD AVERAGE
XWAF 15kT	40'497.0	40'497.0	↔	40308.7
XWAF 10kT	47'845.0	47'845.0	↔	47780.5

Disclaimer:

This publication has been prepared by Riverlake.

While every care has been taken to ensure the accuracy of the information contained in the document, Riverlake does not assume or accept any responsibility for the correctness or completeness of the material set out herein. The rates contained in this publication are indicative only and are subject to change without notice.

The views expressed do not necessarily reflect the views of Riverlake or any of the Riverlake affiliated companies. It should not be seen or regarded as a business recommendation or a solicitation to do business.

This publication is copyright of Riverlake. Unauthorised reproduction or redistribution is prohibited unless approved by Riverlake.